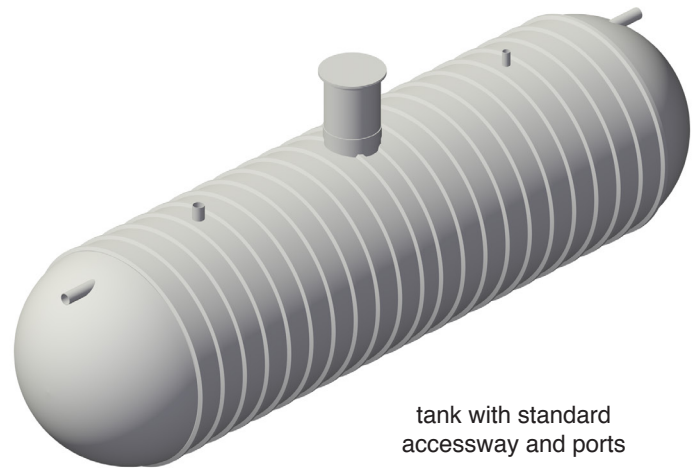


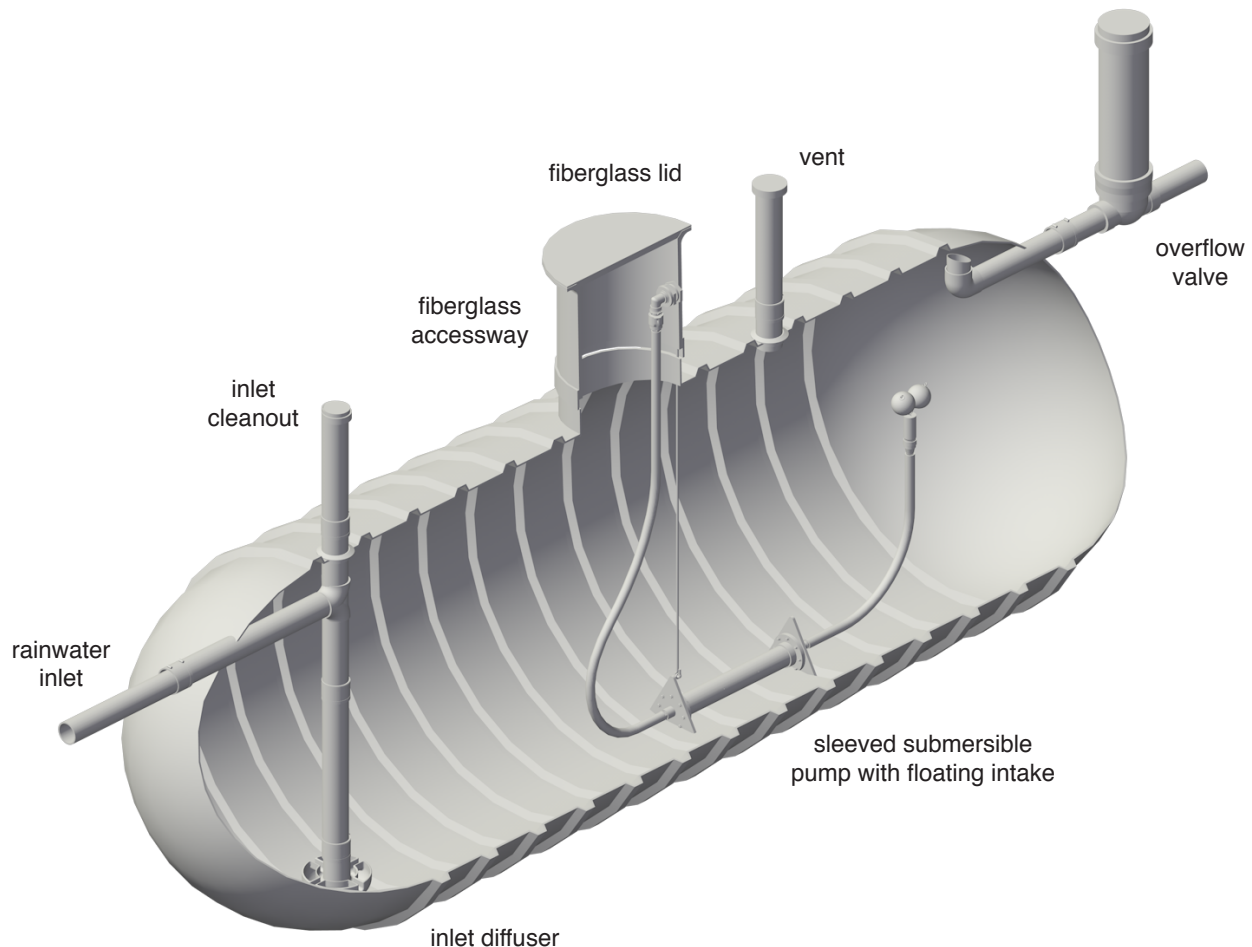
RainSub

The *RainSub* is a high-strength ribbed cylindrical tank made of fiberglass-reinforced plastic (FRP) with penetrations and accessories optimized for rainwater harvesting. Standard tanks range from 4,000 to 50,000 gallons with diameters from 6 to 12 feet. A large diameter flanged fiberglass accessway with a bolted composite lid provides easy passage for people and pumps around water and electrical fittings; an inlet port on one end connects to an internal inlet tee with a cleanout port; an outlet port on the opposite end connects to an internal skimming fitting; and a top vent port is provided to equalize air pressure. Straps and turnbuckles are provided for anchoring and lifting lugs are provided for secure handling. Optional components include an inlet diffuser, overflow valve, vent cover, cleanout cover, fiberglass internal ladder and precast concrete deadmen.



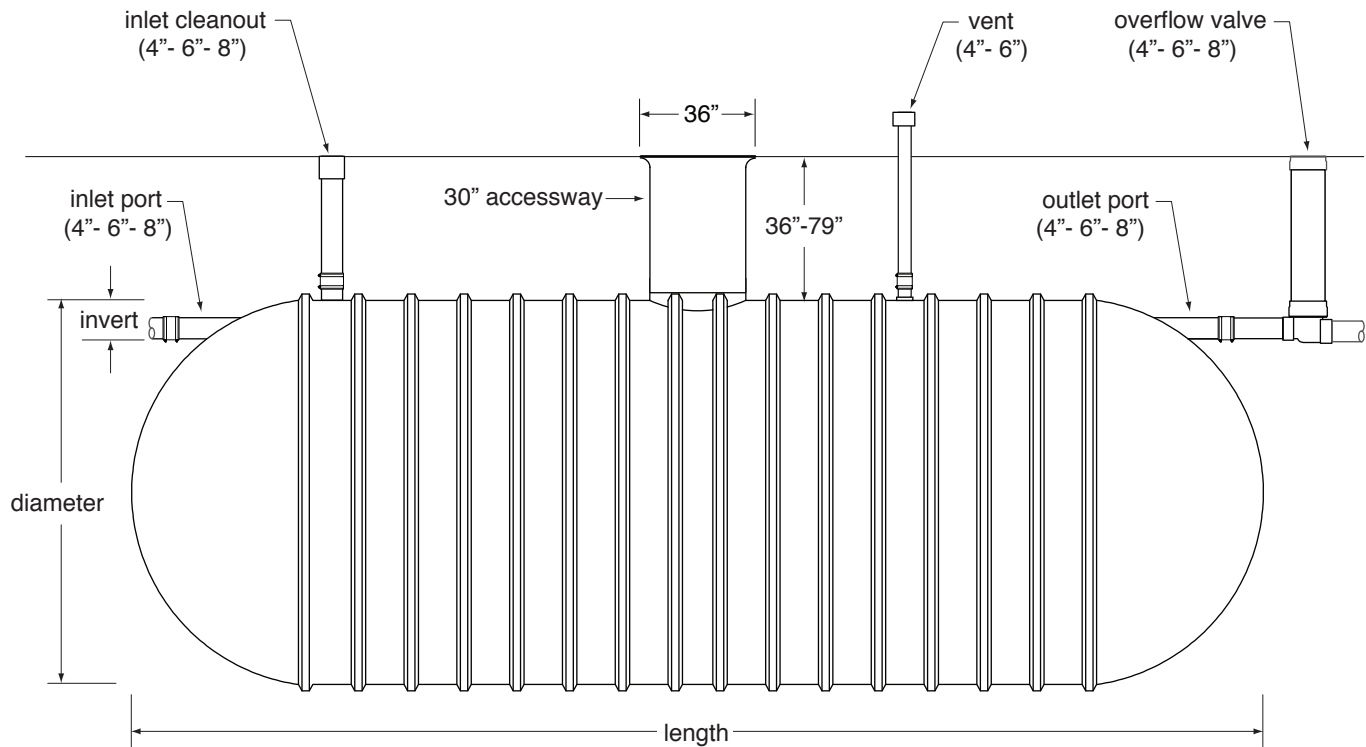
SYSTEM COMPONENTS

RainSub tanks are supplied with prefabricated stub-outs pipes for the access riser, inlet, inlet cleanout, and outlet. The access riser and lid, inlet cleanout riser and cap, vent riser and cap, diffuser assembly, skimmer assembly, and external overflow valve are attached in the field using supplied flexible couplings and bonding materials.



PHYSICAL CHARACTERISTICS

Following are dimensions for the most common RainSub configurations. The size and location of the accessway, ports, and vent can be changed as required, and the height of each can be adjusted during installation to match field conditions. FRP straps and heavy-duty galvanized steel turnbuckles (not shown) are provided to anchor the tank to pre-cast reinforced concrete deadmen, cast-in-place reinforced concrete deadmen, reinforced concrete slabs, or soil screw anchors to secure the tank during the backfill process and to prevent flotation. Where vehicle traffic is possible, the inlet cleanout, accessway, and overflow valve must be protected by cast iron or other traffic-rated frames and covers that float above.



Model	Gallons	Diameter	Length	Ports	Vent	Invert	Straps	Weight
RainSub-0406	4000	6'-0"	21'-11"	4"	4"	10"	2	2200
RainSub-0506	5000	6'-0"	26'-5"	4"	4"	10"	4	2600
RainSub-0608	6000	7'-8"	20'-7"	4"	4"	10"	2	2600
RainSub-0808	8000	7'-8"	26'-1"	4"	4"	10"	4	3400
RainSub-1008	10000	7'-8"	31'-7"	6"	4"	13"	4	4200
RainSub-1208	12000	7'-8"	37'-1'	6"	4"	13"	4	5100
RainSub-1510	15000	10'-0"	29'-6"	6"	4"	13"	4	6600
RainSub-2010	20000	10'-0"	37'-9"	8"	6"	16"	6	8600
RainSub-2510	25000	10'-0"	47'-7"	8"	6"	16"	8	11100
RainSub-3010	30000	10'-0"	55'-10"	8"	6"	16"	10	13200
RainSub-4010	40000	10'-0"	73'-8"	8"	6"	16"	14	17900
RainSub-5012	50000	11'-11"	68'-1"	8"	6"	23"	18	20000